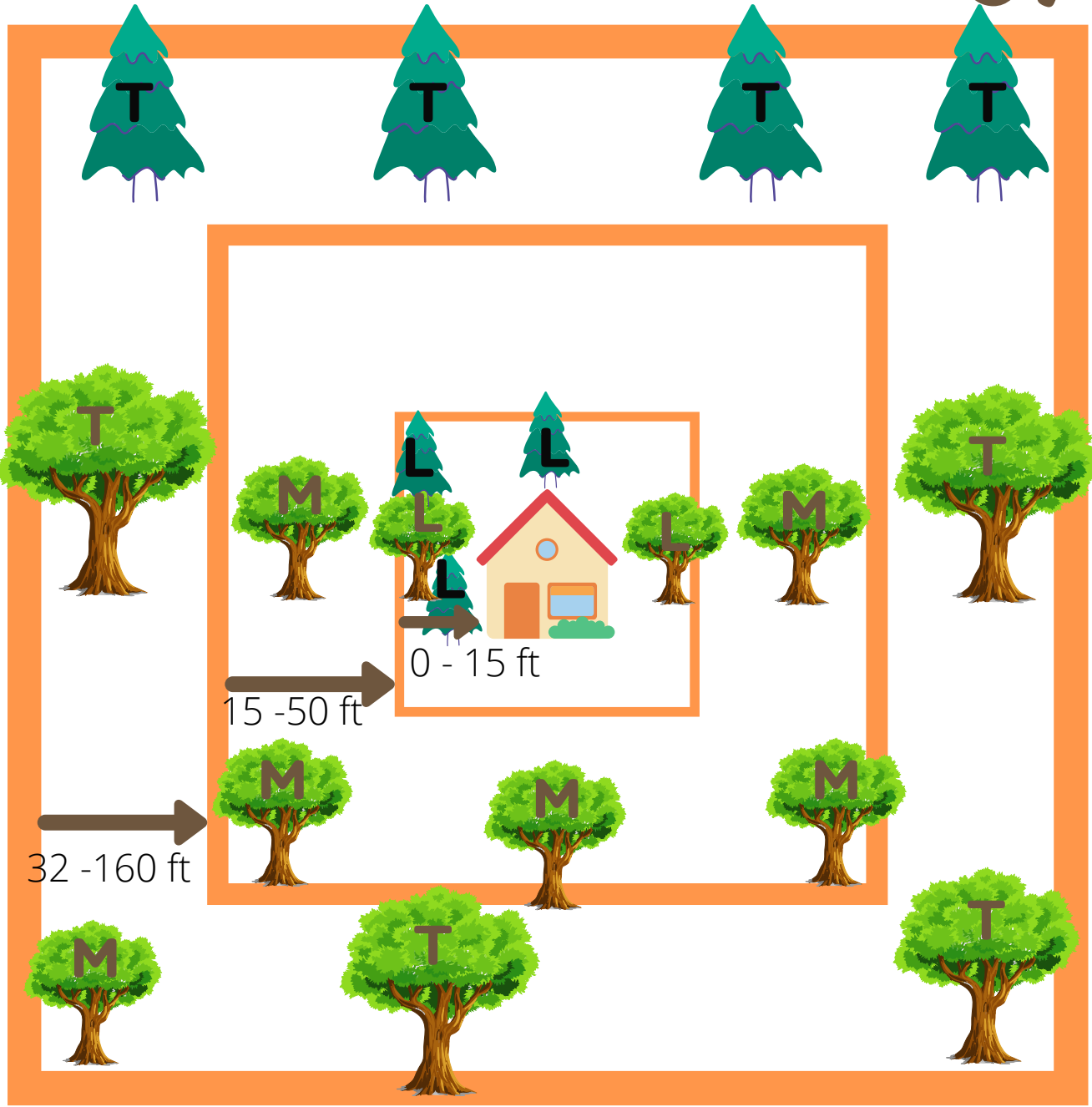


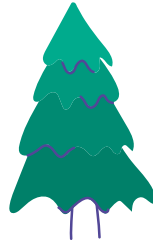
Tree Planting Guide to Conserve Energy



LEGEND



Deciduous Tree



Coniferous Tree

T

Tall Tree

M

Medium Tree

L

Low Shrub/Tree

Plant shrubs near an air conditioner providing shade to make it run more efficiently.

Ideally plant deciduous trees on the West side of your house 15 to 50 ft from the house..

Create a wind break by planting large evergreen trees on the North side between 32 and 160 ft from your house.

For additional shade plant low trees within 12 ft of your home on the East or West sides of your home.



Beware: Plant trees at least 6 feet away from buildings but 9 feet away if they have a foundation; shrubs should be planted at least 3 feet away from structures; plant at least 6 feet away from fences or property lines, 9 feet from hydrants and 1.5 feet from the edge of your driveway or hydro boxes. **Check with your municipality before planting trees for any specific regulations in your area.**